



# Remedium Labs

a unit of smilecurelifestyle Pvt. Ltd

"Transparency, Accuracy & Speed" - Our promise To you

www.lab.remEDIUMhealth.co.in

Franchisee Name

03369029634



## Partner with a Trusted Diagnostic Brand

**India's Growing diagnostic Brand Focused On  
Quality, Ethics, and Affordability.**

*Franchise Opportunity*



# Remedium Labs

a unit of smilecure lifestyle Pvt. Ltd

"Transparency, Accuracy & Speed" - Our promise To you

# FAIR PRICE TESTING LAB

*With Personal Health Relationship manager*

1st in  
**INDIA**



## Who we are

Remedium Labs is a professionally managed diagnostic powerhouse. We are committed to delivering accurate, timely, and affordable pathology services through NABL-aligned quality standards.

## Our Vision

To make reliable diagnostics accessible in every corner of India through a robust, supportive franchise network.

## Our Mission

Standardized testing, comprehensive partner training, and sustainable business growth.

## Why work with us?

- ✓ India's First Proven Fair Price diagnostic model with high demand market.
- ✓ Low-investment franchise with fast break-even potential
- ✓ Centralized lab support ensuring accurate and timely reports
- ✓ Complete marketing, training, and operational support system

## Centralized Support



Centralized client support serves both franchise partners and customers from advanced system. It ensures quick assistance, smooth operations, and a consistent service experience.

## Logistics



Our efficient logistics system ensures timely and safe sample collection and transportation. This guarantees faster reports, and reliable service across all franchise locations.

## Marketing



We provide centralized marketing support to boost local visibility and lead generation. Franchisees receive ready creatives, branding tools, and digital promotion support.

## Revenue



We offer a transparent and franchise-friendly revenue-sharing model. It ensures fair earnings, predictable margins, and long-term profitability.



+91 79805 40259

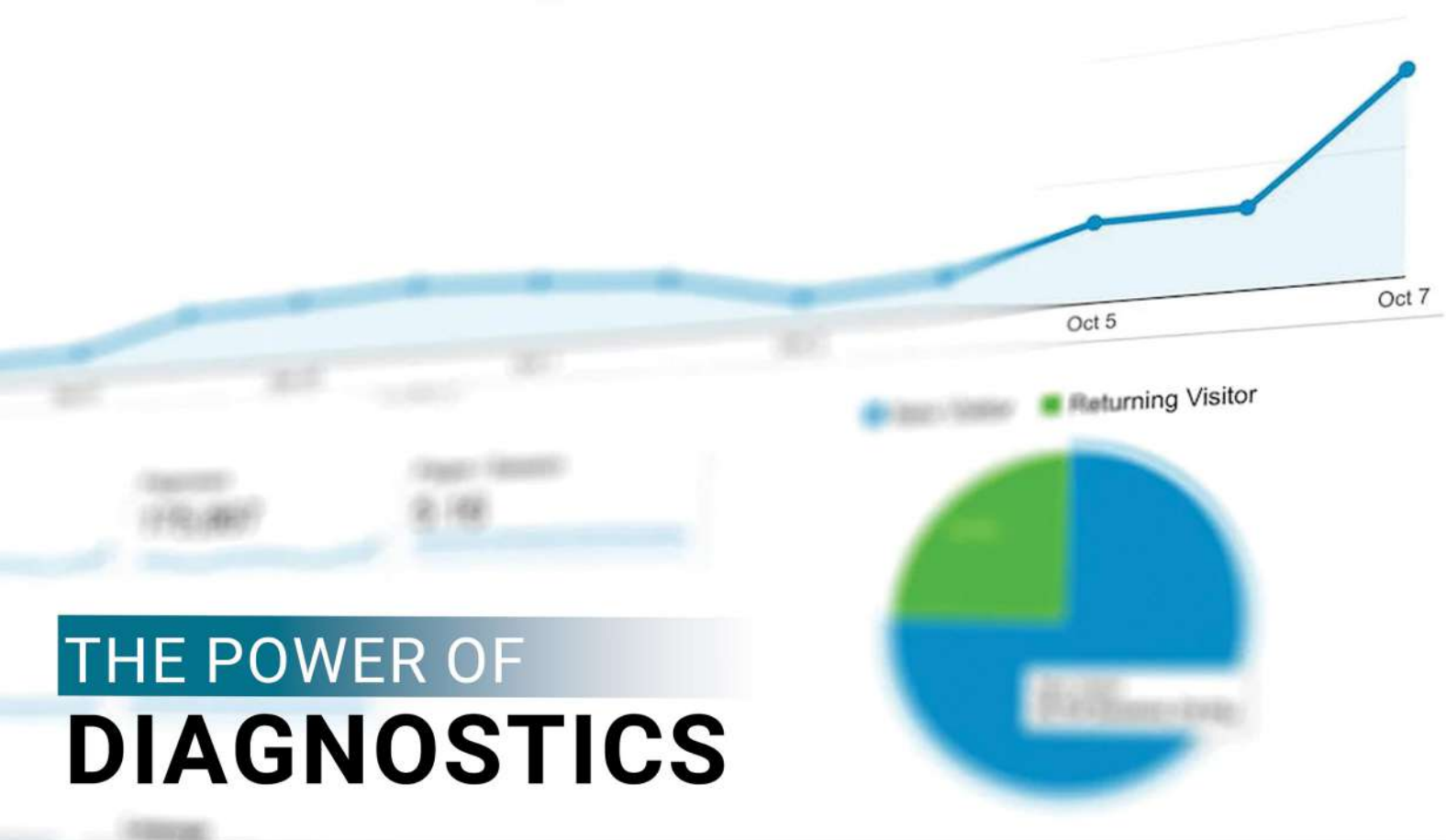


franchise@remediumhealth.co.in



Fortune Township, Shop no - 60, Jessore Road, Kazipara

North 24 PGS, Kol- 700124, West Bengal



# THE POWER OF DIAGNOSTICS

The diagnostic industry continues to show strong and sustainable growth across markets. Advancements in medical technology and increased doctor dependency on accurate reports are expanding test volumes. Government health programs and corporate wellness initiatives further strengthen long-term demand. Together, these factors make diagnostics a stable, scalable, and future-ready business opportunity.



- ✓ Surging Demand: Driven by lifestyle changes and a rise in preventive health awareness
- ✓ Recession-Resistant: Healthcare is a necessity, not a luxury; revenue remains consistent regardless of economic cycles
- ✓ High Lifetime Value: Chronic condition monitoring ensures a loyal, repeat patient base

**“DIAGNOSTICS IS NOT JUST A BUSINESS OF TODAY  
IT IS A NECESSITY THAT GROWS STRONGER WITH TIME.”**



Collection Center



Central Lab



Digital Report

## THE **ASSET-LIGHT** COLLECTION MODEL

You manage the patient experience; we handle the complex science.

- ✓ **Low Overhead:**  
No heavy capital investment is required in expensive laboratory machinery, keeping startup and operational costs low.
- ✓ **Seamless Logistics:**  
Samples are collected at your center and efficiently transported to our Central Lab using a secure and monitored logistics system.
- ✓ **High Returns:**  
With strong demand and repeat customers, franchisees can target a monthly turnover starting from ₹2,00,000 and scale steadily.

Our asset-light model allows franchisees to focus on customer service and business growth rather than infrastructure management. By eliminating heavy equipment ownership, operational risks are significantly reduced. Centralized testing, logistics, and technology support ensure consistent quality with minimal capital exposure.

**“Smart investment. Strong healthcare returns.”**

✔ **Low Entry Cost:**

A one-time franchisee fee of ₹70,000 provides access to a trusted diagnostic brand, systems, and ongoing support without heavy financial burden.

✔ **Minimal Setup Investment:**

Franchisees need only invest in basic interiors and essential infrastructure, making it an asset-light and low-risk business model.

## Investment Box

### Low Entry Cost

Starting From

**₹ 70,000/-**

✔ **Secure & Flexible Agreement:**

The 11-month renewable agreement ensures operational security while offering flexibility for long-term partnership growth.

✔ **Standardized Operations:**

All consumables, including vials and syringes, are supplied directly by Remedium Lab, ensuring consistent quality, compliance, and accuracy across all centers.



# Remedium Lab



## We provide the blueprint, you build the future.

- ✔ **Space Requirement:**  
A carpet area of 200–300 sq. ft. in a prime or easily accessible location is recommended to ensure smooth patient flow, visibility, and operational efficiency.
- ✔ **Standardized Branding:**  
Franchisees receive access to authorized brand logos, signage designs, and approved color themes to maintain a consistent and professional brand identity across all centers.
- ✔ **Professional Presentation:**  
Standard staff dress codes and official ID formats are implemented to create a professional environment and build immediate trust with patients.

## Our Promise

Our team provides complete guidance for legal and licensing formalities. We also support lab branding, marketing, and operational setup. From start to launch, we guide every step to establish a full-fledged blood collection center and a reliable healthcare unit.

“From licensing to launch, we guide every step in building a trusted healthcare center.”

# SMART LOGISTICS



WE USE THERMALLY PROTECTED, TEMPERATURE-CONTROLLED SAMPLE TRANSPORT BOXES WITH DIGITAL TRACKING. THIS ENSURES REAL-TIME LOGISTICS UPDATES AND MAINTAINS SAMPLE INTEGRITY THROUGHOUT TRANSIT. AS A RESULT, TESTING ACCURACY AND OVERALL SERVICE QUALITY ARE CONSISTENTLY PRESERVED.



## Thermal Protected

Thermally protected transport systems maintain required sample temperatures during transit. This prevents sample degradation and ensures accurate test results. It adds an extra layer of quality control across the entire logistics chain.



## App Connected

The logistics system is fully connected with our smart mobile franchisee application. It provides real-time tracking and status updates of samples in transit. This ensures transparency, accuracy, and better coordination for franchisees and customers.



## Safe Transport

Safe transport protocols ensure samples are handled with utmost care at every stage. Protective packaging and monitored movement minimize risk of damage or contamination. This guarantees reliable testing and consistent report accuracy.

*“Safe logistics is not just transportation— it is the foundation of quality, trust, and accuracy.”*

Safe logistics plays a critical role in maintaining overall business quality. Proper handling and controlled transport preserve sample integrity and testing accuracy. Real-time monitoring reduces errors, delays, and operational risks. This builds trust among doctors, patients, and franchise partners. Consistent logistics quality strengthens brand reliability and long-term growth.



**“REMEDIUM LAB: SMART LOGISTICS THAT DELIVER ACCURACY.”**

# TRAINING



**We provide comprehensive training to ensure smooth and confident franchise operations.**

- ✓ Hands-on training to operate our IT systems, billing software, and report management tools
- ✓ Professional training on patient handling, communication, and service etiquette
- ✓ Practical guidance on daily operations, workflow management, and best practices
- ✓ Ongoing support to maintain consistent service quality across all Remedium Lab centers

**“Proper training turns daily operations into a smooth, confident, and successful business.”**



# WE PROVIDE OPERATIONAL SUPPORT

**WE PROVIDE COMPLETE OPERATIONAL SUPPORT, INCLUDING TRAINED RECEPTIONIST AND PHLEBOTOMIST ASSISTANCE. THIS ENSURES SMOOTH DAILY OPERATIONS AND CONSISTENT SERVICE**

REMEDIUM LABS



**“Strong operational support turns every franchise into a smoothly running healthcare center.”**



# THE MARKETING ENGINE

## Our Marketing Support!



### Creative Vault

Franchise partners receive ready-to-use digital posters, promotional creatives, and locally tested marketing ideas to support both online and offline campaigns.



### Doctor Connect Program

Our proven strategies help franchisees build strong, long-term relationships with local doctors, clinics, and healthcare providers to ensure consistent referrals.



### Hyper-Local Digital Presence

We create and manage a strong digital presence focused specifically on your franchise territory, ensuring maximum visibility among nearby patients and faster local lead generation.

## Why Choose Our Marketing Expert

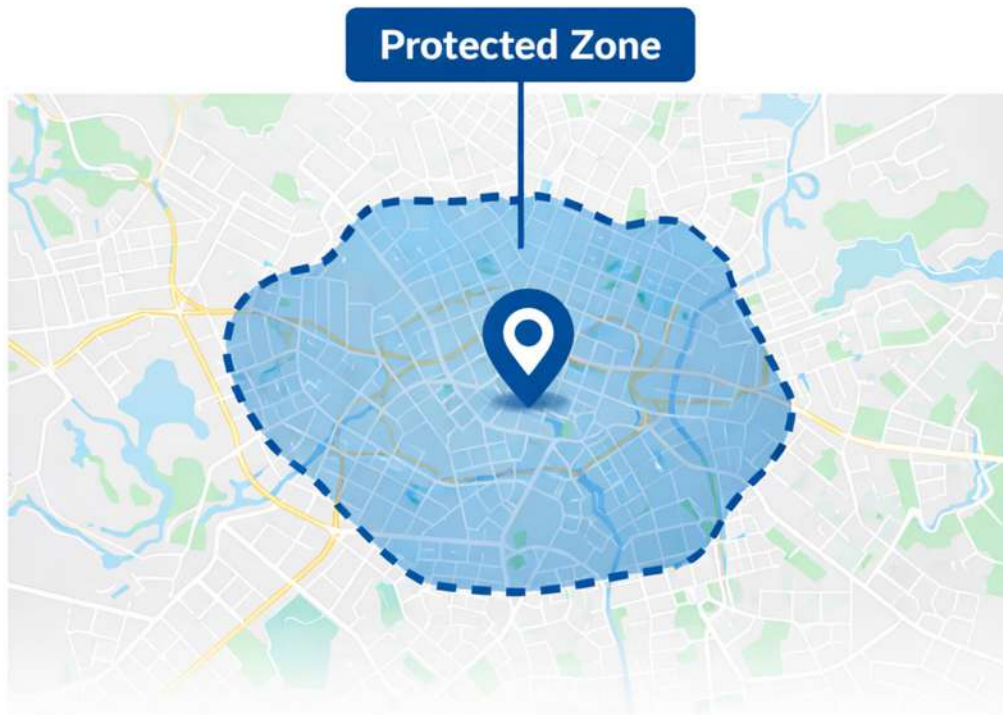
- ✓ Deep experience in healthcare and diagnostic brand marketing.
- ✓ Data-driven strategies focused on leads, conversions, and growth.
- ✓ End-to-end support from launch campaigns to long-term brand building.

## Specialized Test Profiles

Exclusive "Generic Blood Profiles" are designed to attract price-sensitive and preventive-care customers, increasing test volume and repeat visits.

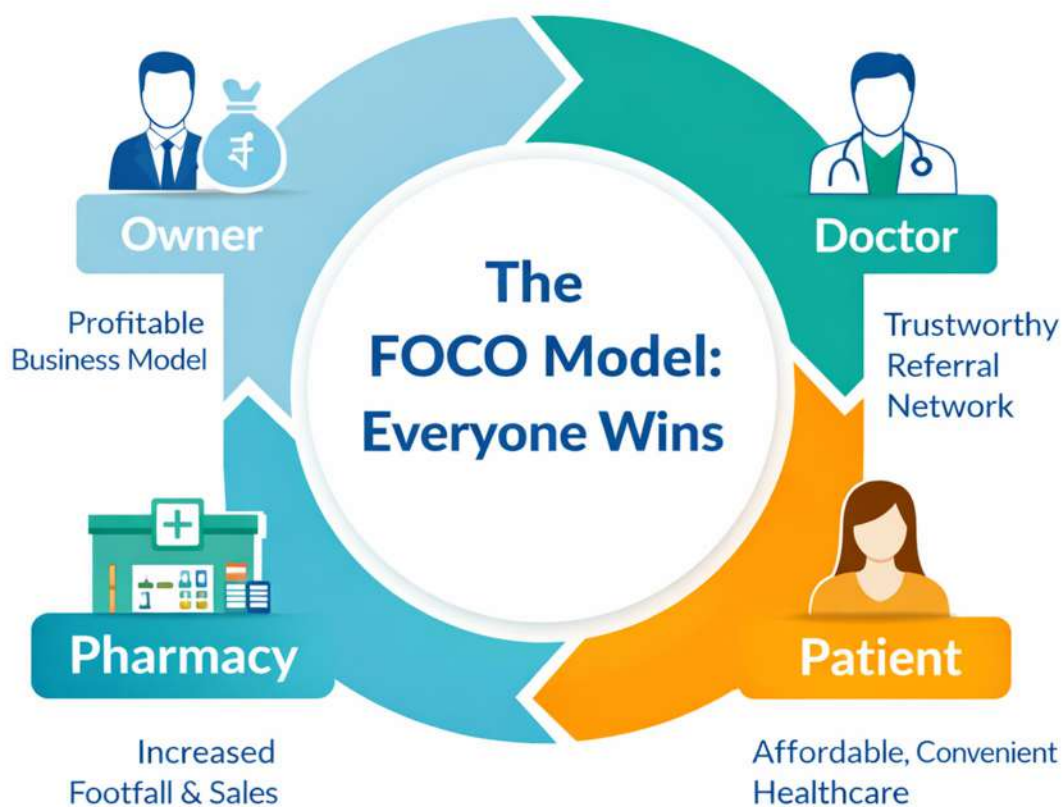
# ADVANCE MARKETING TOOL

## GAIN MAXIMUM EXPOSURE AND FASTER CUSTOMER REACH.



## **“Exclusive Territory. Scalable Growth. First-Mover Advantage.”**

- ✔ **Exclusive Zone:**  
Each franchise is allotted a strictly defined geographical territory, ensuring zero internal competition. This exclusivity allows you to focus entirely on customer acquisition, doctor relationships, and brand building within your area without dilution of revenue or market share.
- ✔ **Expansion Rights:**  
High-performing franchise partners are granted first priority to expand by opening additional collection centers. This structured expansion model helps you scale systematically while leveraging the same trusted brand, systems, and operational support.
- ✔ **First-Mover Advantage:**  
By entering untapped or rapidly developing healthcare markets at an early stage, you gain a decisive edge. Early establishment helps secure long-term patient trust, strong doctor networks, and sustainable revenue growth before market saturation.



- ✔ **For the Owner:**  
Build a high-potential diagnostic business targeting ₹2 lakh or more in monthly revenue, backed by Remedium Lab's end-to-end operational support, centralized testing, logistics, technology, and marketing—allowing you to focus on growth without day-to-day operational stress.
- ✔ **For the Patient:**  
Access India's first Fair Price diagnostic testing model, combined with a dedicated Personal Health Relationship Manager who ensures smooth bookings, timely sample collection, transparent pricing, and hassle-free report delivery.
- ✔ **For the Doctor:**  
Benefit from a structured patient acquisition model with an assurance of up to 40 patients per day for the first six months, along with complimentary point-to-point travel support, enabling doctors to focus entirely on quality patient care.
- ✔ **For the Pharmacy:**  
Unlock additional revenue streams through test booking commissions, while receiving complete insurance integration and IT system support to simplify operations and enhance customer service.

**The FOCO Model: A Profitable Ecosystem Where Everyone Wins.**

# SMART BUSINESS MANAGEMENT SYSTEM



## Mobile Application

Our smart mobile application allows customers to book tests and access reports anytime. It provides real-time updates, report downloads, and support notifications. This enhances convenience, transparency, and overall patient experience.



## Smart Dashboard

The franchisee management dashboard provides complete control over daily operations. It enables real-time tracking of samples, reports, revenue, and performance. This ensures transparency, efficiency, and data-driven decision-making.



## Report Tracking

The report tracking system offers real-time status updates from sample collection to delivery. Franchisees and customers can easily monitor progress at every stage. This ensures transparency, faster turnaround, and reduced follow-up queries.

## Smart Management

We provide every franchise with a smart business management system for complete operational control. It streamlines billing, reporting, inventory, and staff management from one dashboard. This improves efficiency, accuracy, and overall profitability.



## Benefit of Smart Business

- ✓ Real-time control over billing, reports, and daily operations.
- ✓ Reduced manual work with automated processes.
- ✓ Better decision-making through performance insights.
- ✓ Improved efficiency leading to higher profitability.

“When operations are smart, growth becomes predictable.”

# Invest in Healthcare

## Higher Returns Than Bonds, Backed by Real Demand.

The healthcare and diagnostics sector is one of the fastest-growing industries, driven by rising lifestyle diseases, preventive health awareness, and an aging population. With a strong and consistent CAGR, diagnostics offers predictable demand and long-term sustainability

### Multiple Revenue Generation Streams

- Routine and preventive diagnostic tests with high repeat frequency
- Chronic disease monitoring ensuring long-term patient retention
- Doctor referrals, corporate health checkups, and pharmacy partnerships
- Specialized and bundled test profiles for value-driven customers

This diversified revenue model reduces dependency on a single income source and creates steady monthly cash flow.

### Why It's a Smarter Investment Than Bonds

Unlike bond markets that offer fixed but limited returns, a diagnostic franchise provides:

1. Higher return potential with scalable monthly revenue
2. Inflation-protected income through price and volume growth
3. Asset-light entry with operational support reducing business risk
4. Opportunity to build a tangible, appreciating healthcare business

### Investor Advantage

Investing as a franchisee means participating in a recession-resistant sector with growing demand, professional systems, and predictable cash flow—combining the stability of fixed-income instruments with the upside of entrepreneurship.

Healthcare diagnostics is not just an investment—it's a growth-driven, impact-oriented business that delivers stronger returns than traditional low-yield instruments while building long-term value.



**Remedium Lab**

*a unit of smilecurelifestyle Pvt. Ltd*

"Transparency, Accuracy & Speed" - Our promise To you



**JOIN  
US**

# JOIN THE REVOLUTION

We are looking for healthcare professionals, entrepreneurs, and visionaries.

Low Investment  
Scalable Model  
Ethical Operations



Fortune Township, Shop no-60, Barasat, Kolkata - 124

[www.lab.remEDIUMhealth.co.in](http://www.lab.remEDIUMhealth.co.in)

Call : 03369029634 Email: smilecurelifestyle@gmail.com



Scan The Qr to Get Detailed Information from Our Website.

**Join Now**

## Diagnostic Services at Your Fingertips

Download our app for convenient access to test reports, health packages and real-time diagnostic updates.

- ✓ View & download test reports
- ✓ Explore tests & health packages
- ✓ Secure and patient-friendly interface
- ✓ Track sample status in real-time

